



CITY OF MEMPHIS
REQUEST FOR QUOTE # 296756
CENTRAL STATION DRAINAGE PIPE REPAIR
ST03243
Addendum No. 1

The following information encompasses Addendum No. 1 for the above Referenced RFQ.

The City of Memphis has received and is providing answers for the following questions:

Q. Does this slip lining require receiving pits?

A. The manufacturer confirmed that it was not required to have a receiving pit, as long as the pipe could be pushed/pulled from one end. This is intended to be done from the structure indicated on the plans.

Q. Can this slip lining be installed in the wet?

A. Yes, it can be installed in service.

Q. How many working days are allowed for in the contract?

A. The bid documents allow for sixty (60) working days as defined in 00710 Section 3.6. Please see all of 00710 Section 3 for additional information.

Other Comments:

- The manufacturer suggested preparing a mandrel prior to ordering the slip lining to ensure fit.

Acknowledgement of this addendum should be included in returned proposal.

NAME and TITLE

DATE



RFQ#296756 Central Station Glass Reinforced Piping Rehabilitation

Pre-Bid

Wednesday, June 10th
10:00am

Agenda

1. Introductions
2. Bidding Timeline
3. Project Overview
4. Questions/Clarifications



Introductions

City of Memphis

Collin Weeks - Construction Inspection Supervisor

Eliza Kline, EI - Senior Drainage Design Engineer

Ben Jones, EI - Drainage Design Engineer

Matthew McBride - Prevailing Wage Officer

MSQ2

Josh Grabowski, PE PMP - Construction Manager

Jacob Wiley, PE PMP - Deputy Program Manager



Bidding Timeline

June 3rd, 2025 - Advertised for Bid

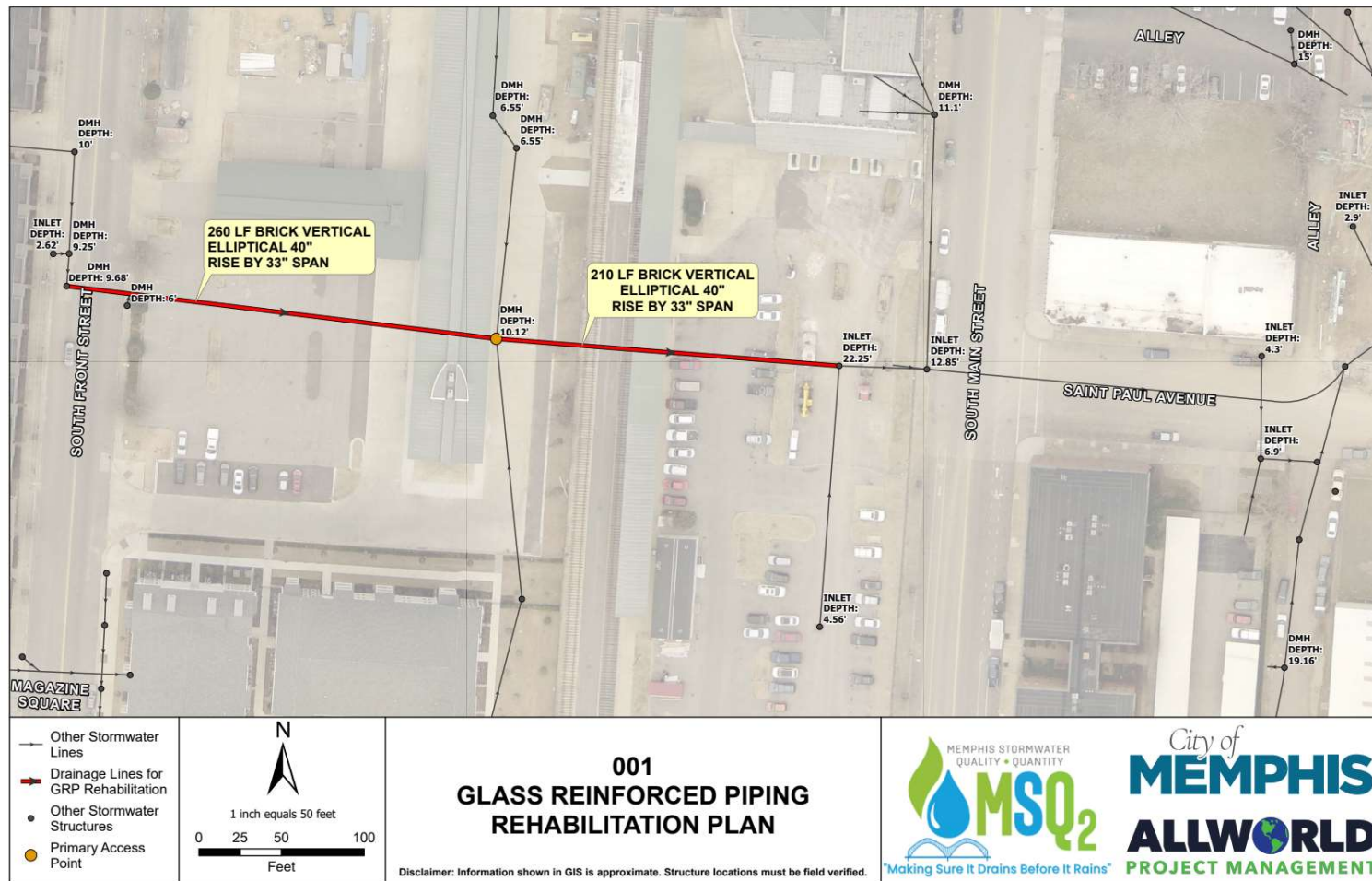
June 11th, 2025 - Pre-Bid Meeting

June 27th, 2025 - Last Day for Questions

June 16th-June 30th - Publish Addendum

July 2nd, 2025 12:00PM Noon - Bids due to City of Memphis

Project Overview



Project Details

Project Scope includes:

- Rehabilitation of 33"x40" Vertical Elliptical Brick Culvert w/ Glass-Reinforced Piping
- Excavation as needed for slip-lining equipment at access manhole
- Cleaning of culvert as needed to prepare for rehabilitation
- Repair of parking lot and any other damage cause during installation
- Grouting of slip-lining
- Post-Rehabilitation Inspection per Spec

Project Details

- Special Specification 02650 “GLASS REINFORCED PIPE LINER INSTALLATION” prepared for this work
- Contractor to provide details on planned traffic control in parking lot compliant w/ Manual on Uniform Traffic Control Devices
- Manufacturer contact information is listed in the Special Instructions to Bidders

Questions or Clarifications?