



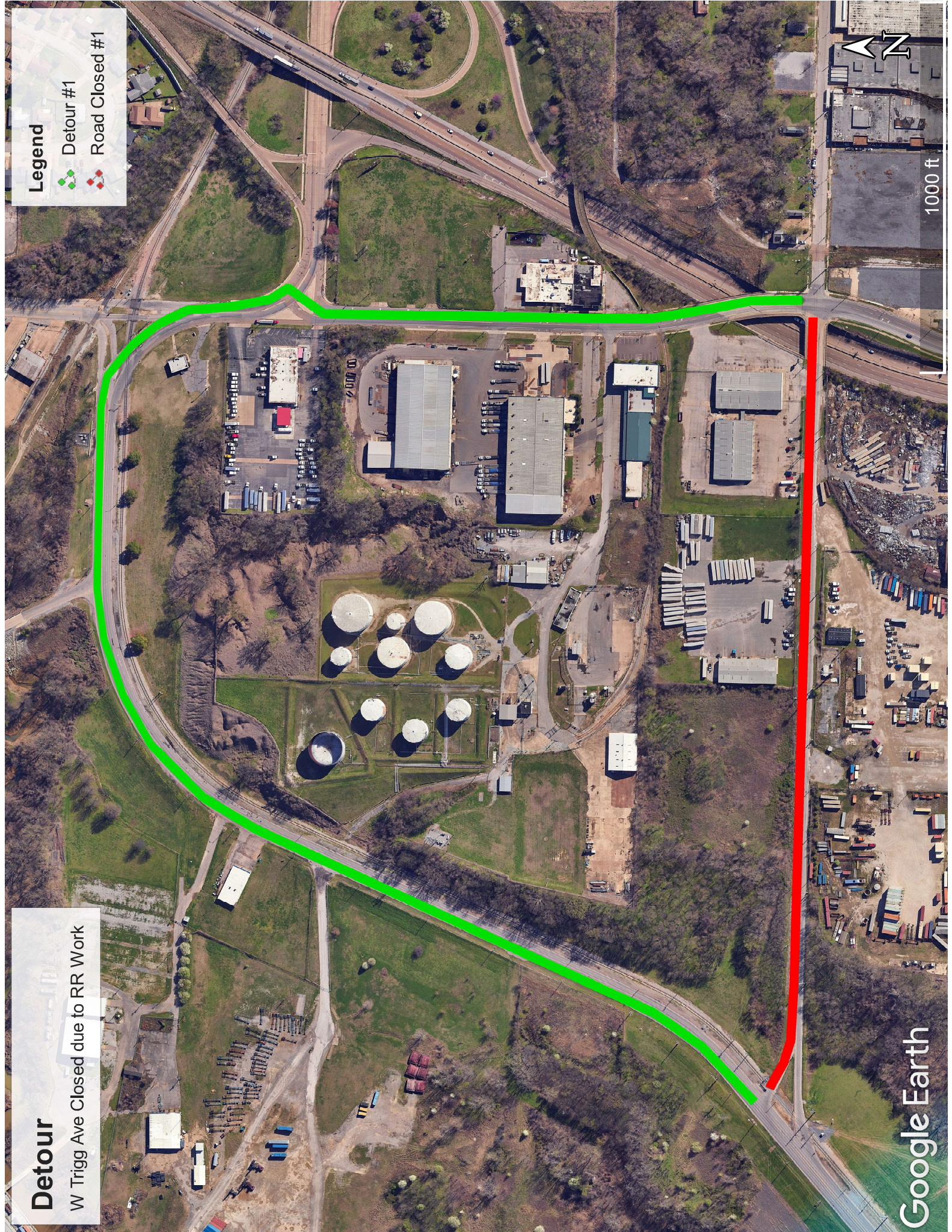
# Detour

W Trigg Ave Closed due to RR Work

## Legend

 Detour #1

 Road Closed #1



# Detour

Riverside Blvd Closed due to RR Work

## Legend



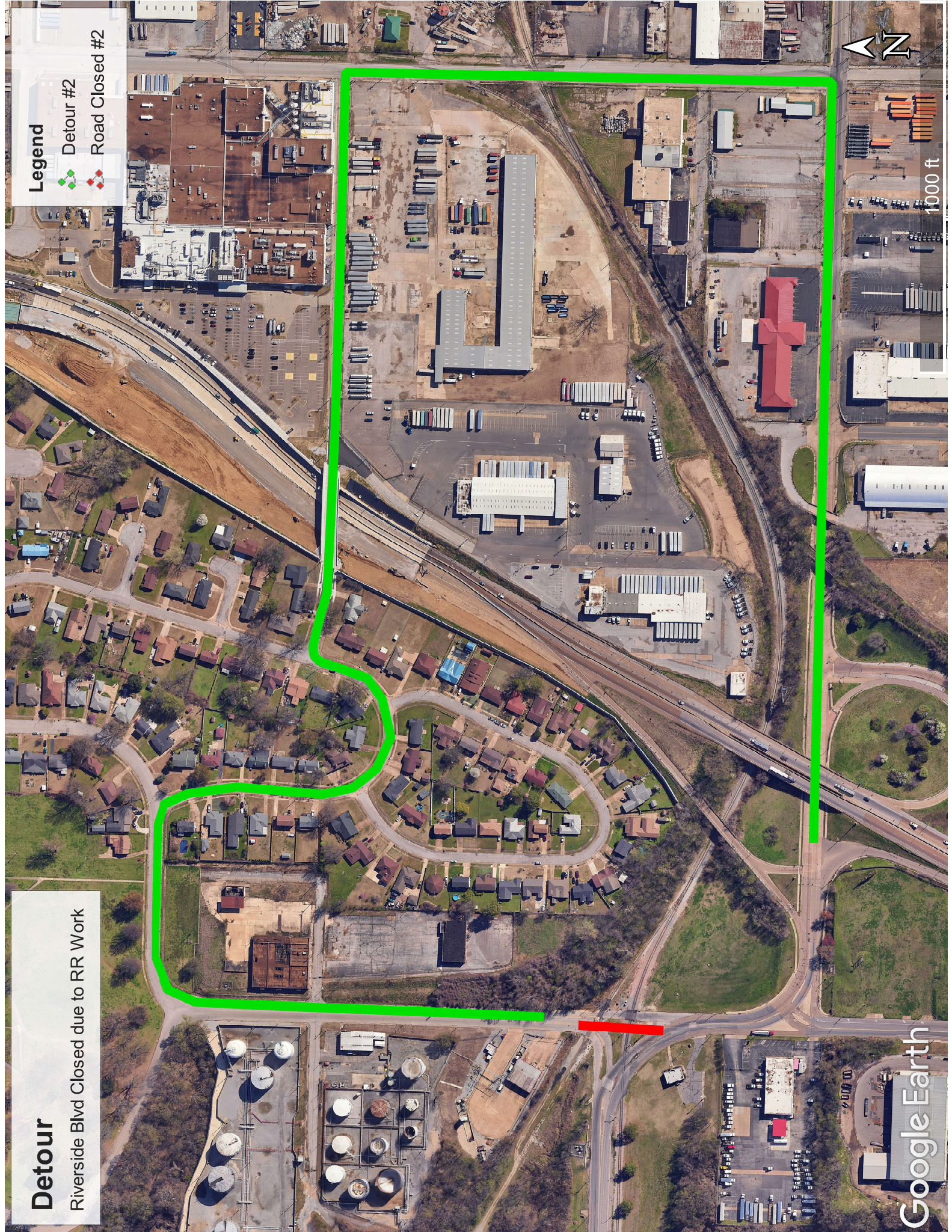
Detour #2



Road Closed #2



1000 ft



# Detour

Harbor Ave Closed due to Channel Ave Intersection Work

## Legend



Detour #3



Road Closed #3



1000 ft

