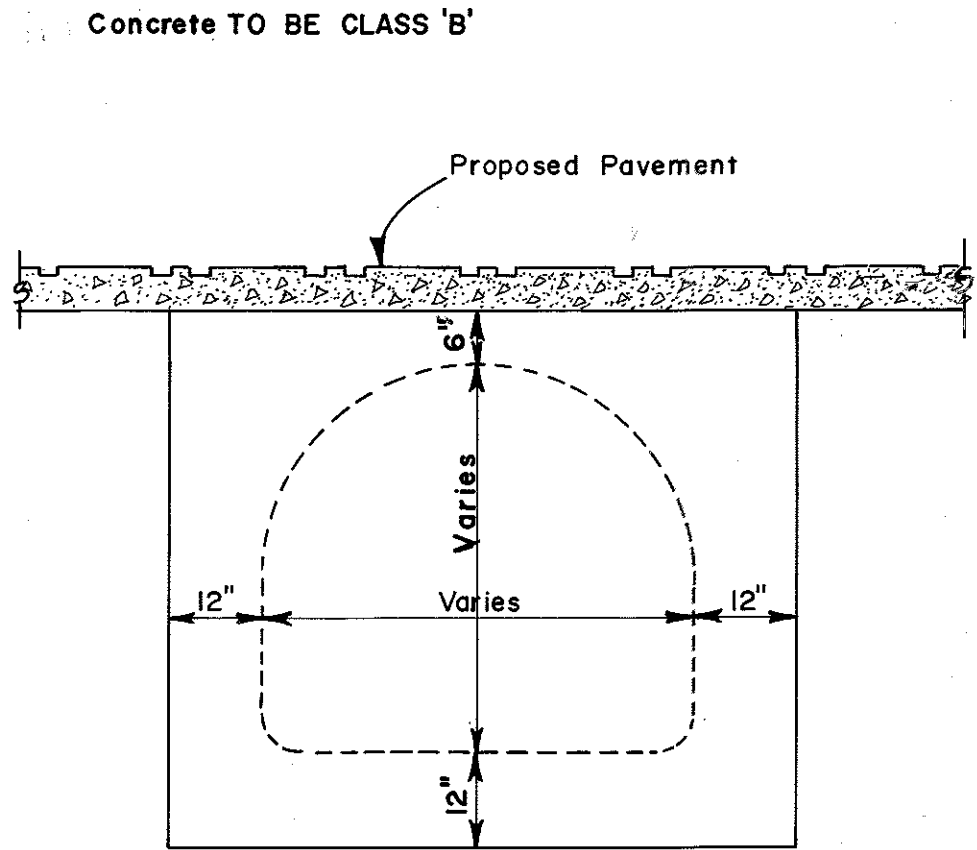
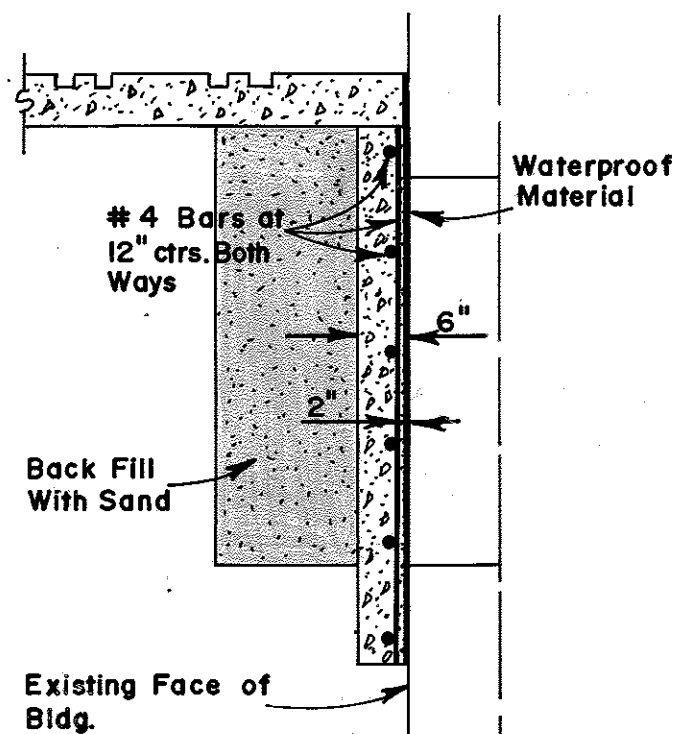


BUREAU, J. G. JAMES, BUREAU ENGINEER, F.E.R. DRAFTSMAN, O.S. DATE, 11-77 SCALE, NONE



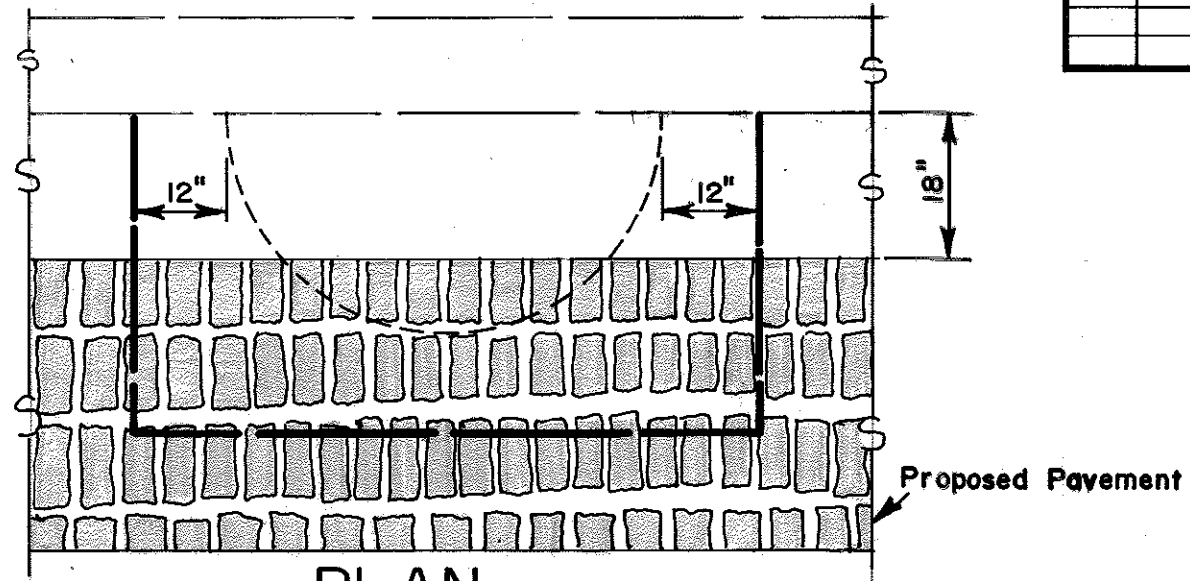
PLAN



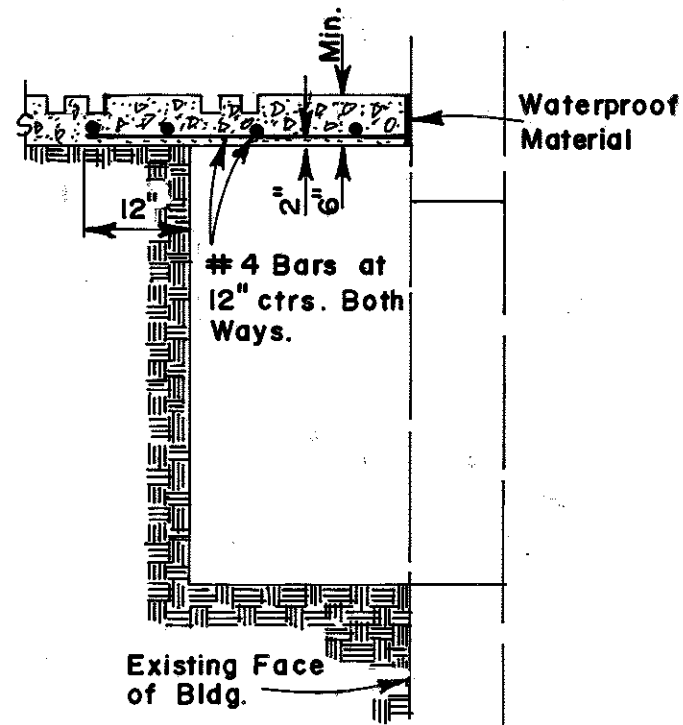
SECTION

ALTERNATE NO. 1

Concrete TO BE CLASS 'B'



PLAN



SECTION

ALTERNATE NO. 2

REVISIONS

NO.	DATE	BY	REMARKS
1	5-30-85	L.R.H.	REMOVED DIV. OF PUBLIC WORKS (T. BLK.)
2	7-22-87	D.H.G.	ADD: CLASS 'B'
3	3-2-88	D.H.G.	REMOVED DEPARTMENT (T. BLK.)

CITY OF MEMPHIS
DIVISION OF ENGINEERING

DESIGN STANDARD
FOR

CLOSING BASEMENT VENTS

[Signature] 11-11-77
CITY ENGINEER DATE

DWG. NO. 36

F.E.R.
[Signature]

JC5756